



29 Radcliffe Way, Derby, DE23 3AQ
£1,600 Per month





£1,600 Per month

29 Radcliffe Way

Derby, DE23 3AQ

- Three Bedroom Detached House
- Modern Kitchen Diner With Integrated Appliances
- Master Bedroom With En Suite And Fitted Wardrobes
- Private Rear Garden And Front Garden
- Detached Garage For Parking Or Storage
- Two Double Bedrooms And One Single Bedroom
- Spacious Lounge With Under Stairs Storage
- Contemporary Family Bathroom And Downstairs WC
- Driveway Parking For Two To Three Cars with Type 2 Ohme EV Charging Point
- Popular Residential Location Close To Amenities

A well presented three bedroom detached home, offering modern living and excellent proportions throughout. This attractive property features a spacious layout ideal for families or professionals, with a contemporary kitchen diner opening onto a private rear garden, a separate front lounge, and three well sized bedrooms including a large master bedroom with en-suite and fitted wardrobes. With the added benefit of a detached garage and driveway parking for multiple vehicles with a type 2 Ohme EV charging point, this home combines practicality with comfort in a highly desirable residential setting.



The Detail

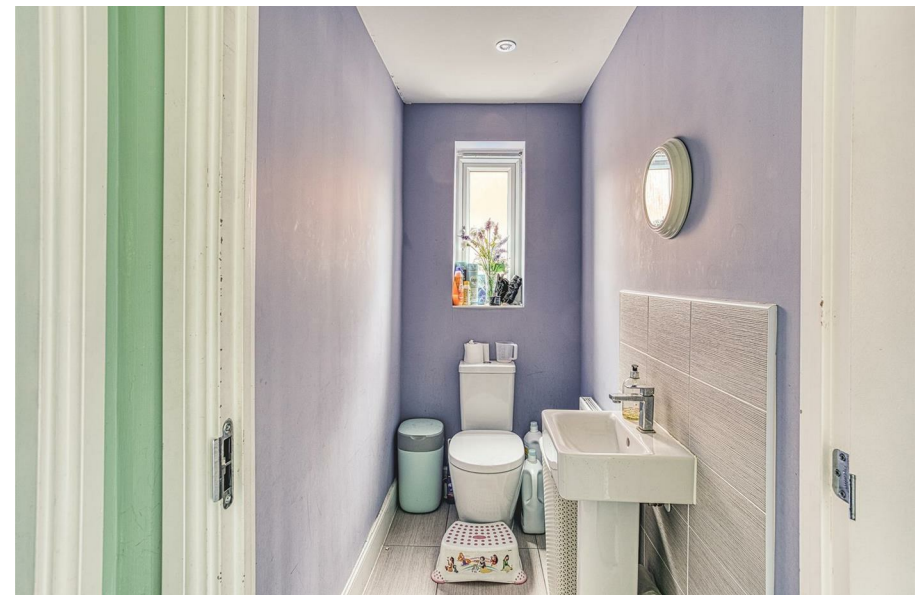
The Location

Reservation Fee & Deposit



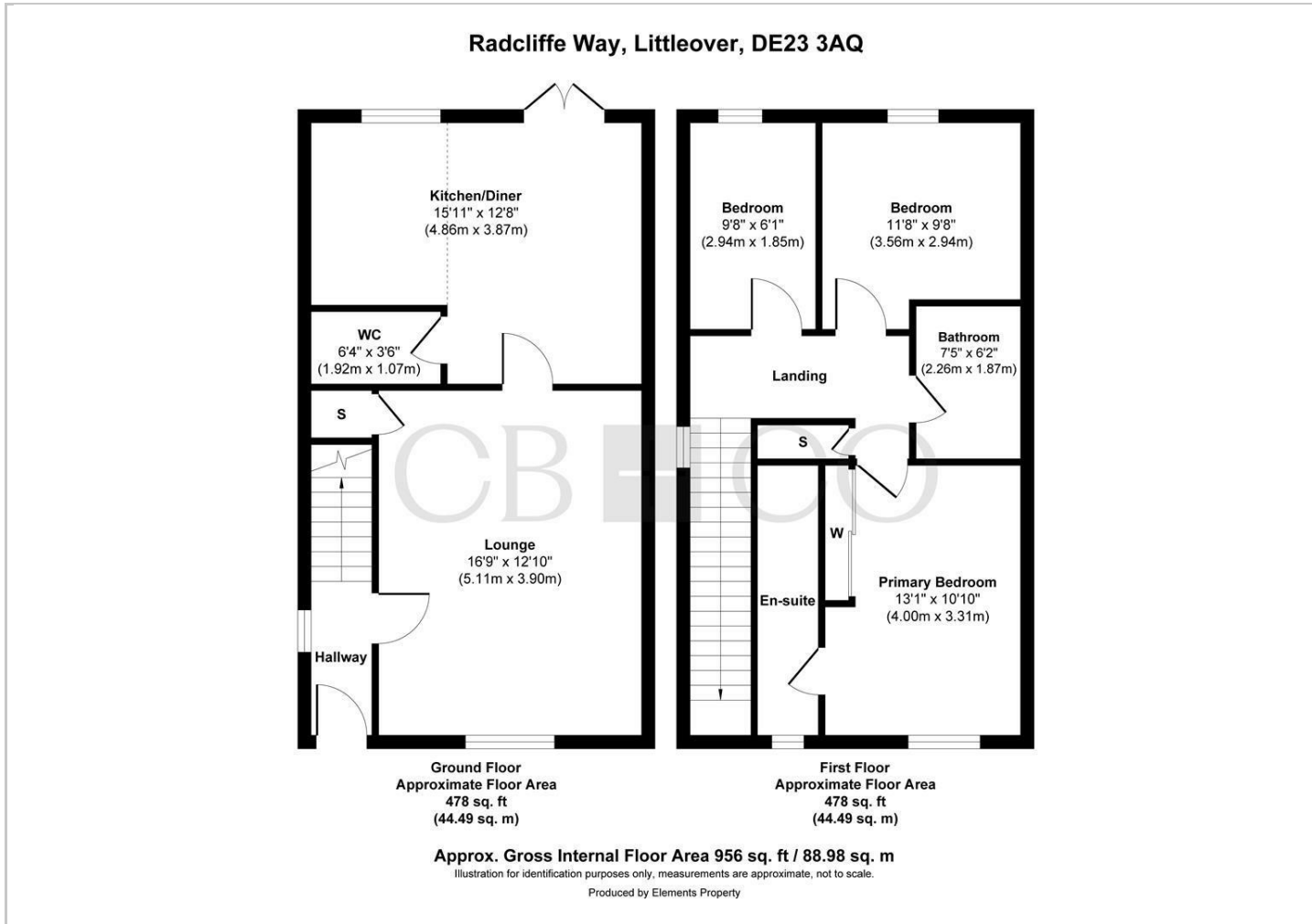


Directions





Floor Plans



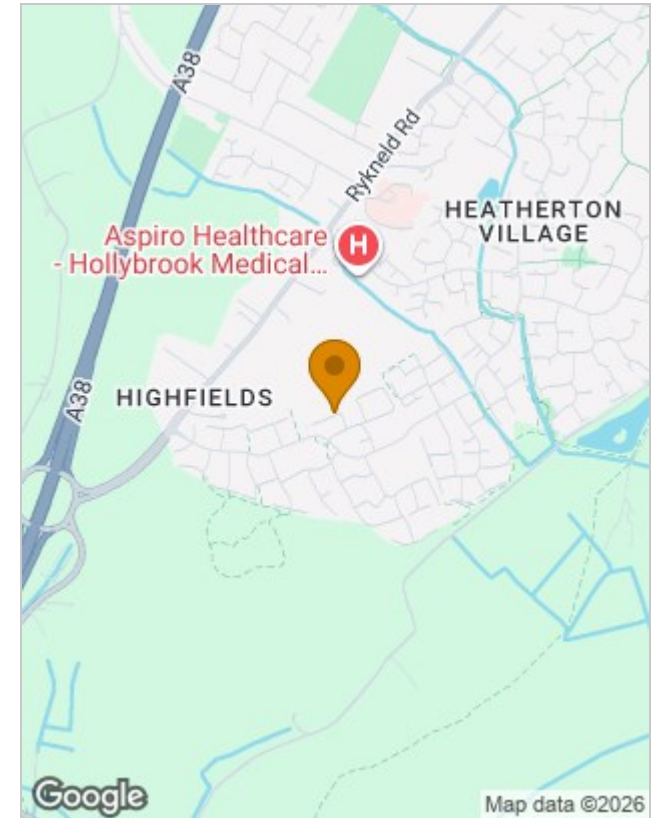
Viewing

Please contact our Lettings Office on 01332 411050 if you wish to arrange a viewing appointment for this property or require further information.

The particulars are set out as a general outline only for the guidance of intended purchasers or lessees, and do not constitute, any part of a contract. Nothing in these particulars shall be deemed to be a statement that the property is in good structural condition or otherwise nor that any of the services, appliances, equipment or facilities are in good working order. Purchasers should satisfy themselves of this prior to purchasing.

First Floor, Darley Abbey Mills Middle Mill, Darley Abbey, Derby, DE22 1DZ
Tel: 01332 411050 Email: hello@curranbirds.co

Location Map



Energy Performance Graph

